



NUWC -- The Vision for Undersea Warfare Superiority



RADM Charlie Young
Commander

Dr. John E. Sirmalis
Technical Director

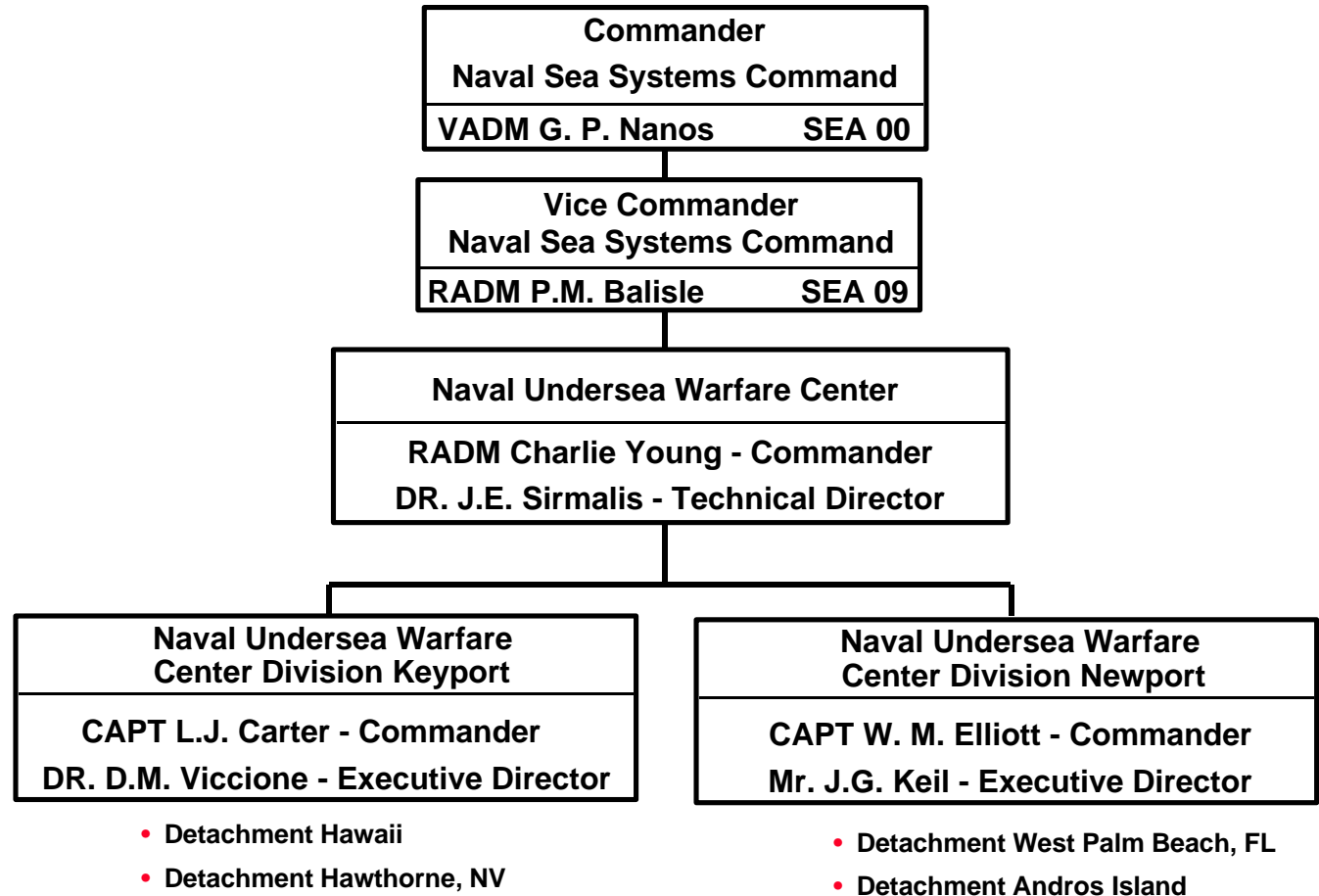




Mission And Command Structure

Develop, field, modernize and maintain systems that ensure our Navy's undersea superiority

- Satisfy today's needs
- Meet tomorrow's challenges



SINGLE NAVY ORGANIZATION FOR THE ENTIRE SUBMARINE WARFARE AND SURFACE SHIP USW SYSTEM



NUWC Leadership

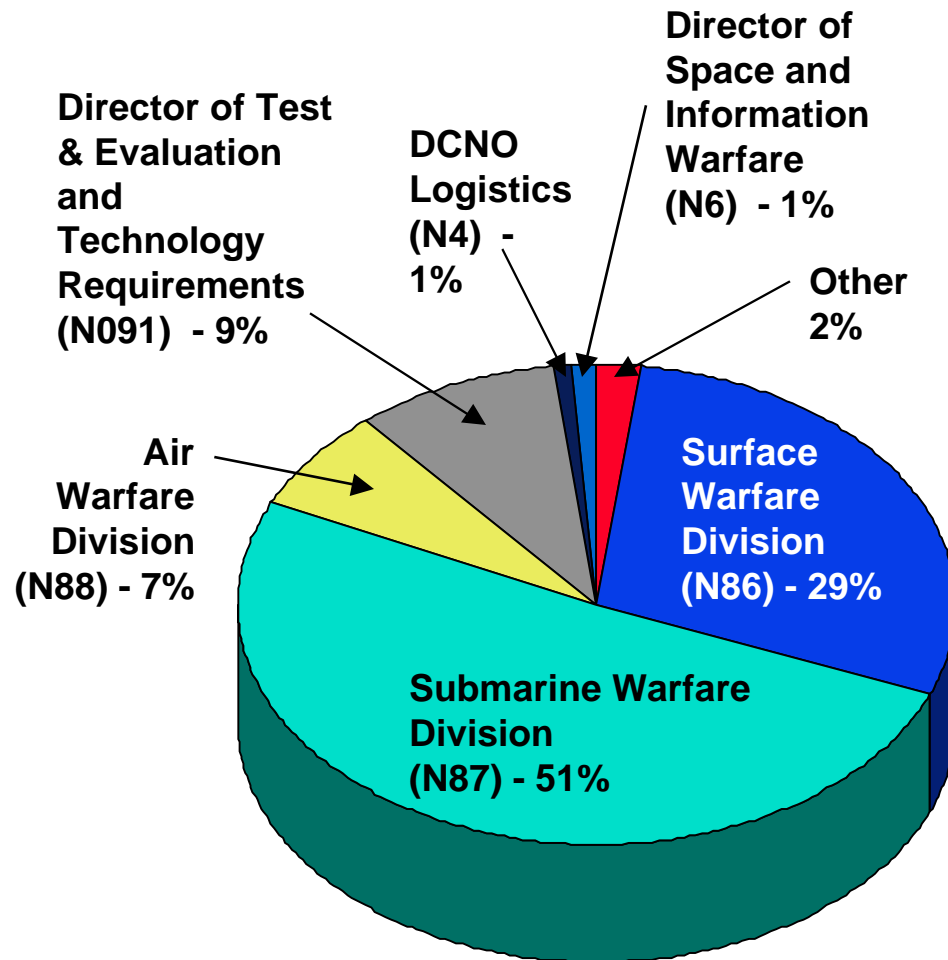
Entire Undersea Tactical Warfare System
for Submarines and Surface Ships



**FULL LIFE CYCLE RESPONSIBILITIES FOR
SUBMARINE AND USW SYSTEMS**



NUWC Customers



TOTAL FUNDING BY SOURCE

- Over half from the Submarine Community
- Over a third from Surface and Air Communities
- About 5% for S&T
- 50% Outsourced in FY 97 (\$426M)

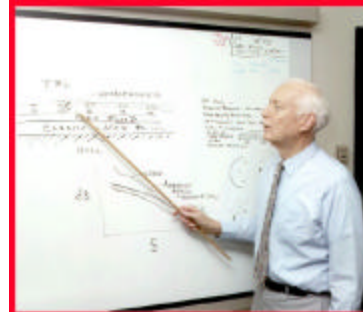
THE BULK OF OUR WORK IS FOCUSED ON NEAR AND MID TERM FLEET NEEDS



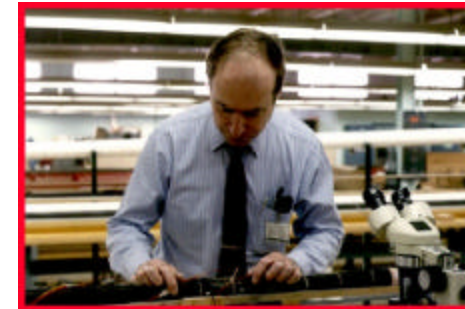
What We Do



Undersea Warfare Analysis



Research and Development



Prototyping



Partnering with Industry and Academia



Systems Development



Fleet Support



Industrial Technology



Testing and Evaluation

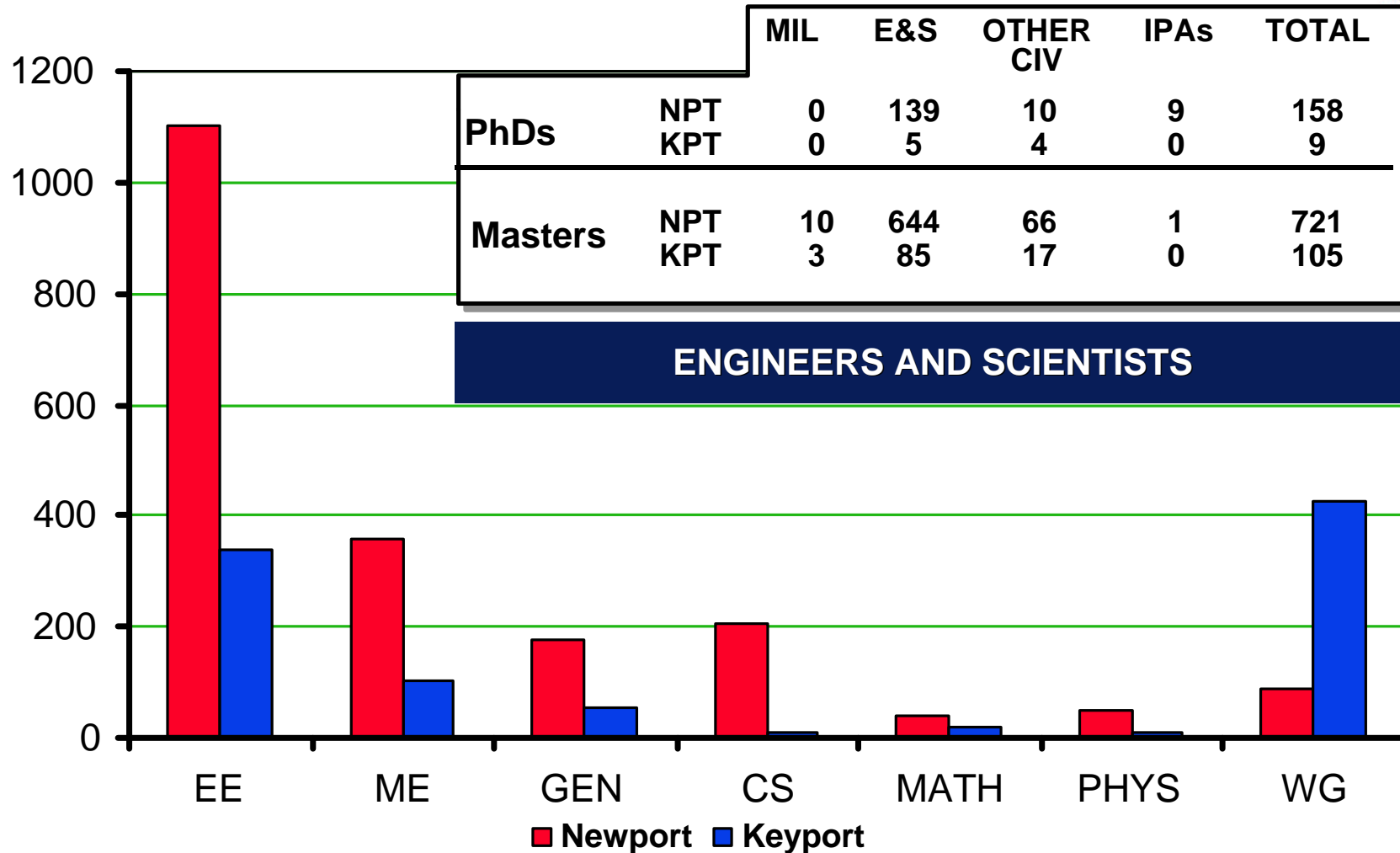


Acquisition and Production Support

SYSTEM DEFINITION, INTEGRATION AND TESTING FOR UNDERSEA WARFARE



Personnel Resources as of 30 September 97



4700 EMPLOYEES: HIGHLY SKILLED AND TECHNICALLY FOCUSED



Increasing Challenges Versus Decreasing Resources



NAVY CHALLENGES

- New, unconventional missions / roles
- Near continuous global naval presence
- Complex and dynamic littoral environment
- New capability rapidly changing through COTS insertion / information technology
- Technology proliferation
- Uncertain and varied threats
- Low tolerance for losses

NAVY RESOURCES

- DoD budget reductions
- Major reduction in Fleet platforms and manpower
- Substantial decrease in acquisition of systems
- Readiness vs. modernization tradeoffs
- Tooth to tail shift signaling further infrastructure reductions

REQUIRES INNOVATIVE APPROACHES IN ALL THAT WE DO



Meeting the Challenge



91% of employees located on-site

94% of employees located on-site

Division
Keyport, WA

~~Detachment
Indian Island, WA~~

HEADQUARTERS
Newport, RI

Division
Newport, RI

- Warfare Center consolidated to two major sites
- 47% reduction in personnel since FY92
- Aggressively implemented BRAC
 - 18 months vs 72 months
- 40% of facilities new or refurbished
- \$139M saved in overhead since FY92
 - \$58M recurring annually
- Projected \$287M savings by FY00
 - \$80M recurring annually

~~Arctic Submarine
Laboratory~~

~~Detachment
New London, CT~~

~~Detachment
Norfolk, VA~~

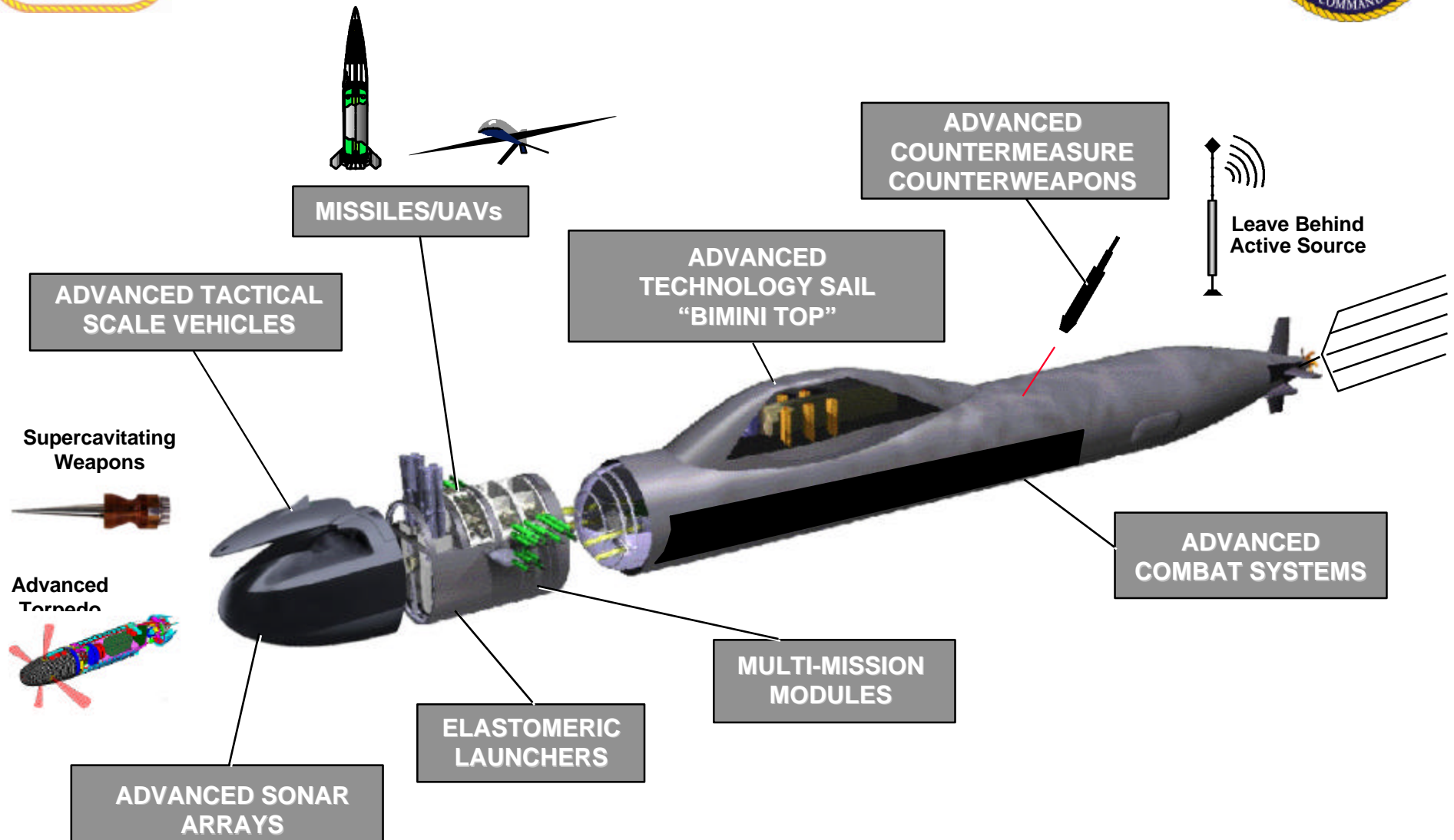
~~NUWC/USRD
Orlando, FL~~

Detachment
Hawaii

Detachment
AUTEK



Submarine Innovative Concepts





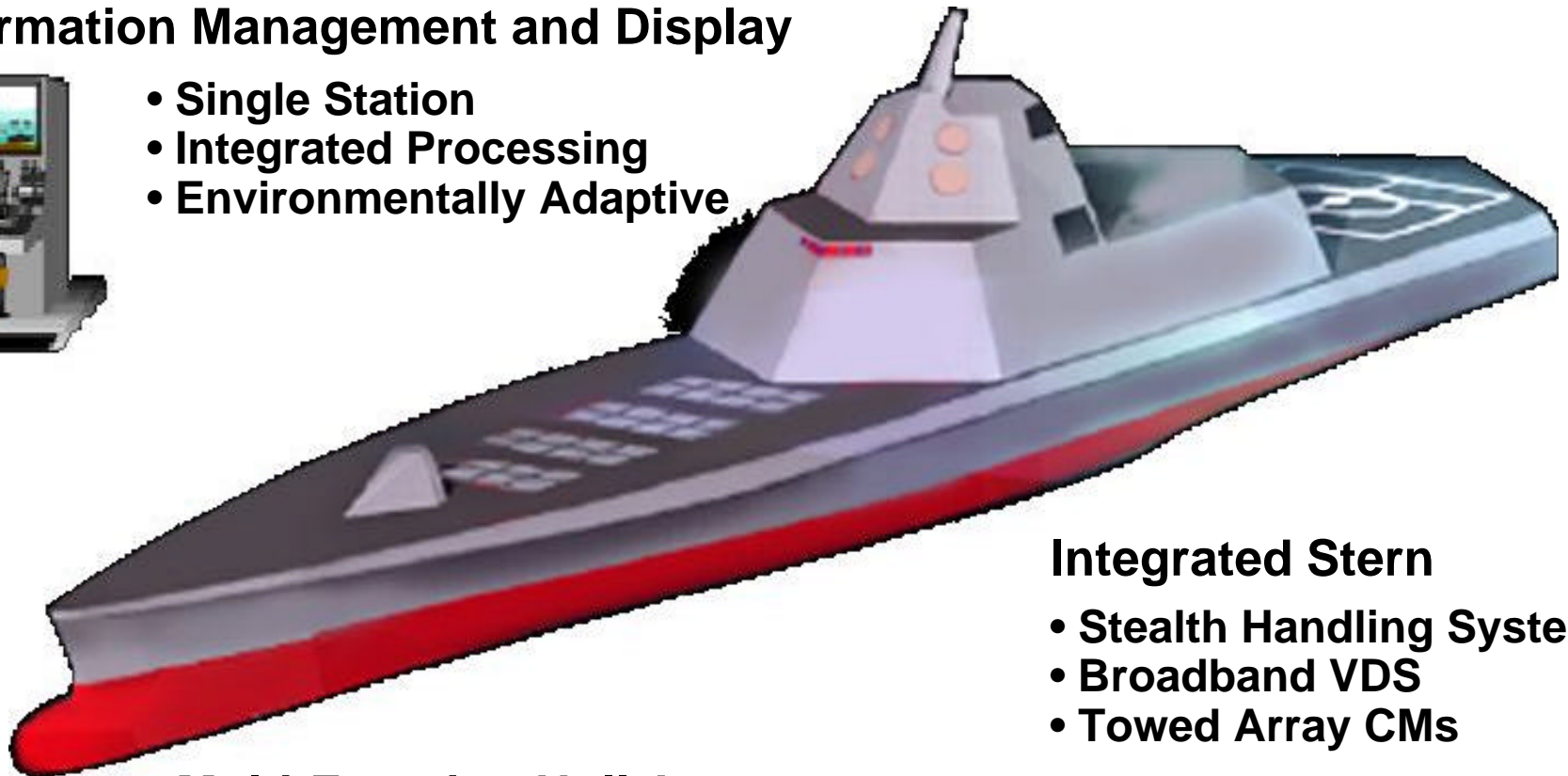
Surface USW Innovative Concepts – DD-21



Information Management and Display



- Single Station
- Integrated Processing
- Environmentally Adaptive



Integrated Stern

- Stealth Handling System
- Broadband VDS
- Towed Array CMs

Multi-Function Hull Array

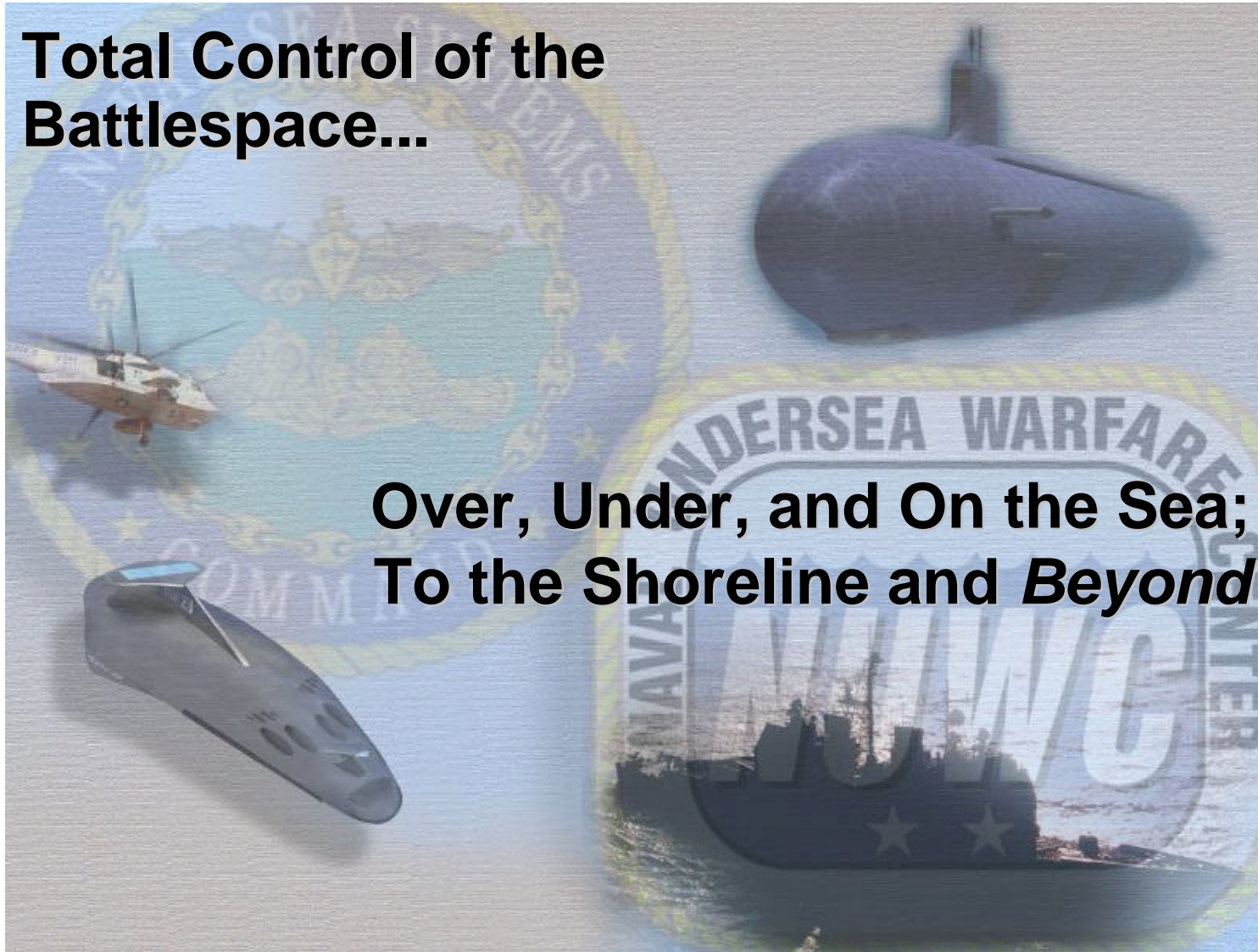
- Object Avoidance Array
 - Broadband Array
 - Low Impact Dome Design
-



NUWC's Mission to the Fleet



Total Control of the Battlespace...



**Over, Under, and On the Sea;
To the Shoreline and *Beyond***