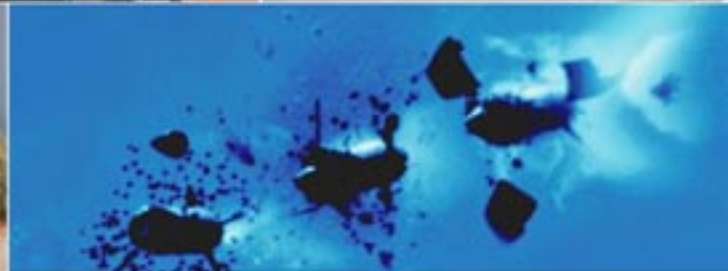


Army Tactical Missile System (ATACMS)

Delays and disrupts threat forces and long-range weapons with long-range, surface-to-surface fire support before these threats can influence the close battle.



DESCRIPTION AND SPECIFICATIONS

The Army Tactical Missile System (ATACMS) is the Army's only long-range, all-weather, fire support weapon system. The ATACMS missile is fired from the M270A1 Multiple Launch Rocket System (MLRS) launcher and the High Mobility Artillery Rocket System (HIMARS) to engage targets at ranges well beyond the capability of existing cannons and rockets.

- ATACMS Block 1 Range: Approximately 165 kilometers
- ATACMS Block IA Range: Approximately 300 kilometers

Blocks I and IA are ground-launched missile systems consisting of a surface-to-surface guided missile with an anti-personnel/anti-materiel (APAM) warhead. The ATACMS with APAM attacks soft targets at extended ranges. Targets include:

- Surface-to-surface missile sites
- Site defense systems
- Logistics elements
- Command, control, and communications complexes

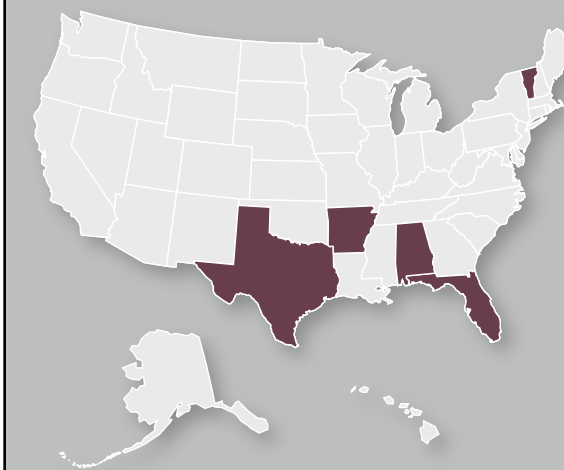
The ATACMS Quick Reaction Unitary (QRU) engages point targets with minimal collateral damage, at ranges comparable to the ATACMS Block IA.

PROGRAM STATUS

- **4QFY04** Complete deliveries of ATACMS Block IA foreign military sale to Korea
- **1QFY05** Begin deliveries of ATACMS QRU missiles from FY03 Operation Iraqi Freedom supplemental

PROJECTED ACTIVITIES

- **2QFY05** Award ATACMS QRU contract
- **2QFY05** Take deliveries of ATACMS QRU missiles



CONTRACTORS

Prime: Lockheed Martin (Dallas, TX; Horizon City, TX)

PM Support: Southeastern Testing Association (SETA) (Huntsville, AL)

Guidance Section/Improved Guidance Section: General Electric (Clearwater, FL) Aerojet (Camden, AR)

Control Actuator Section: BF Goodrich (Vergennes, VT)

INVESTMENT COMPONENT
Modernization

ACQUISITION PHASE
• Production and Deployment